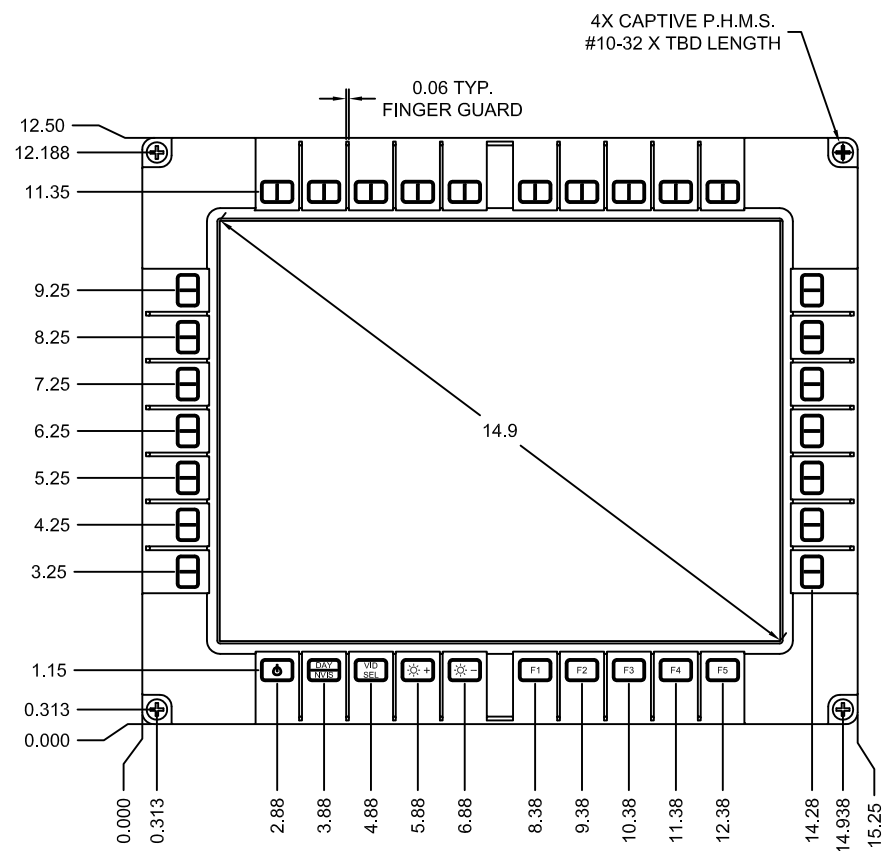
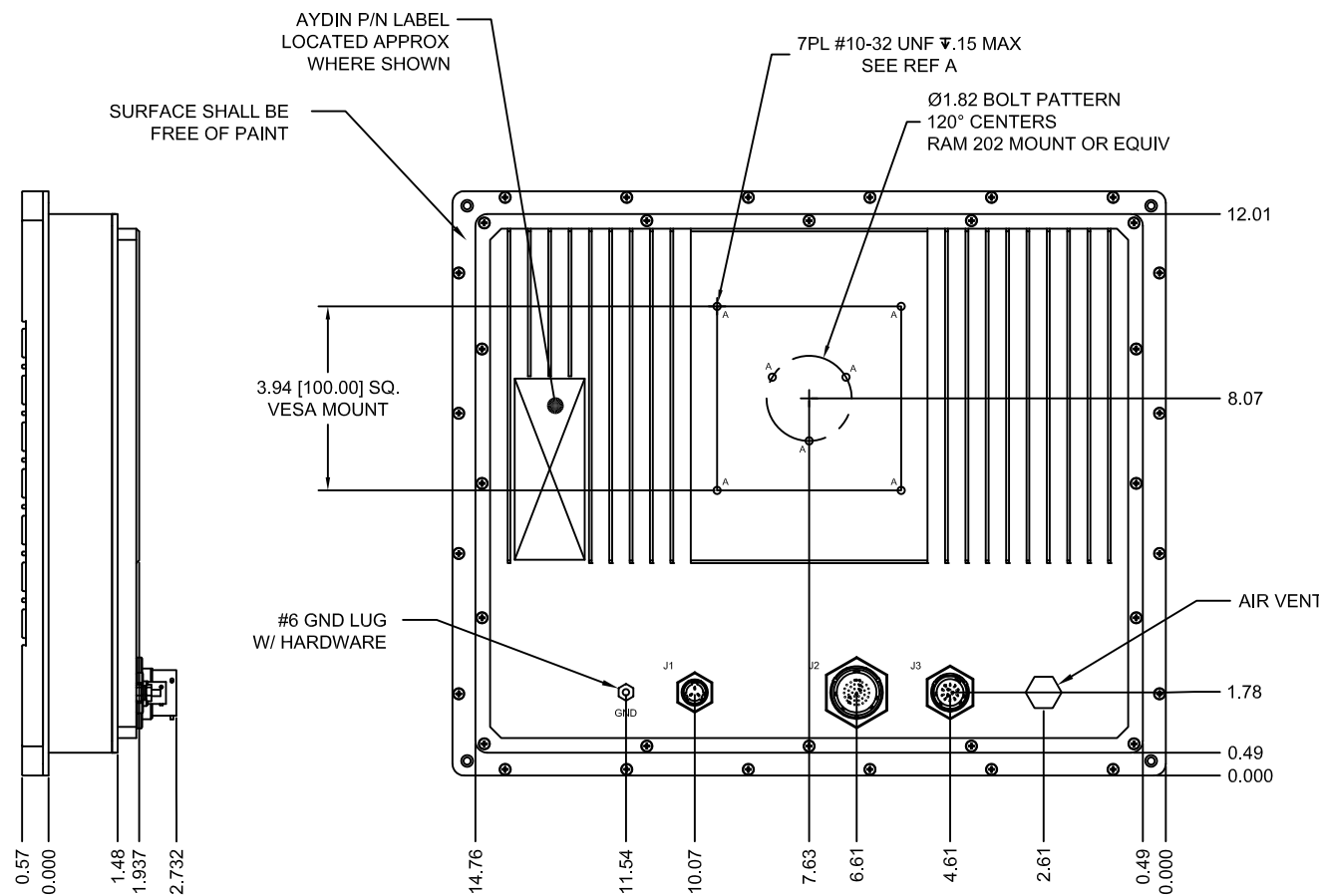


THIS DOCUMENT IS THE EXCLUSIVE PROPERTY OF SPARTON AYDIN, LLC D/B/A AYDIN DISPLAYS. CONTAINS PROPRIETARY AND CONFIDENTIAL INFORMATION OF THE COMPANY, AND IS DELIVERED ON THE EXPRESS CONDITION THAT IT IS NOT TO BE DISCLOSED OR REPRODUCED IN WHOLE OR IN PART, NOR USED FOR MANUFACTURE BY ANYONE OTHER THAN SPARTON AYDIN, LLC D/B/A AYDIN DISPLAYS; AND THAT NO RIGHT IS GRANTED TO DISCLOSE OR SO USE ANY INFORMATION CONTAINED IN THIS DOCUMENT.

REVISIONS			
LVL	DESCRIPTION	DATE	APPROVED
0	PRELIMINARY REVIEW	6/16/15	J.L'H
1	ZN B5 EXTENDED REAR .067 TO AID DESIGN AND ENGINEERING RELEASE	7/08/15	J.L'H



**FRONT VIEW**  
SCALE 1/2



**REAR VIEW**  
SCALE 1/2

NOTES:

1. FINISH IAW TT-PE-529, COLOR 27038 IAW FED-STD-595
2. CHEMICAL FILM IAW MIL-DTL-5541F, TYPE II, CLASS 3, COLOR CLEAR
3. WEIGHT ~14 lbs

UNLESS OTHERWISE SPECIFIED DIMENSIONS ARE IN INCHES AND APPLY BEFORE FINISH SURFACE ROUGHNESS 125 ✓		DRAWN B.C.	6/16/15	<b>AYDINDISPLAYS</b> a sparton company	
TOLERANCE ON FRACTIONS   DECIMALS   ANGLES ± 1/64   .XX=.02   ± 1°/2		CHECKED N/A			
MATERIAL		DRAFTING N/A		<b>INSTALLATION/OUTLINE</b> <b>15 INCH SEALED MONITOR</b>	
FINISH		ENGINEER C.LEWIS	07/08/15		
NEXT ASSY USED ON		APPROVED MFG		SIZE D	CAGE NO. 70MF8
APPLICATION		APPROVED QA		353-7384	REV 1
AYDIN SHOP STANDARDS ARE AN INTEGRAL PART OF THIS DRAWING (296-0077)		FILENAME 353-7384-X_1		SCALE 1/2	SHEET 1_OF_2

THIS DOCUMENT IS THE EXCLUSIVE PROPERTY OF SPARTON AYDIN, LLC D/B/A AYDIN DISPLAYS. CONTAINS PROPRIETARY AND CONFIDENTIAL INFORMATION OF THE COMPANY, AND IS DELIVERED ON THE EXPRESS CONDITION THAT IT IS NOT TO BE DISCLOSED OR REPRODUCED IN WHOLE OR IN PART, NOR USED FOR MANUFACTURE BY ANYONE OTHER THAN SPARTON AYDIN, LLC D/B/A AYDIN DISPLAYS; AND THAT NO RIGHT IS GRANTED TO DISCLOSE OR SO USE ANY INFORMATION CONTAINED IN THIS DOCUMENT.

**(J1) MIL-C-26482 SERIES I**

PIN	SIGNAL
A	+28 VDC
B	+28VDC RTN
C	CHASSIS GND
AMPHENOL- 71-533721-33P	
MATING PLUG- PTO6E833SSR	

**(J2) MIL-DTL-38999 SERIES I**

PIN	MNEMONIC
1	CLK_N
2	CLK_P
3	DIGITAL GND
4	+5V KEYUSB D N
5	KEYUSB D N
6	KEYUSB D P
7	KEYUSB_GND
8	+5V TOUCHUSB
9	TOUCHUSB D P
10	TOUCHUSB D N
11	TOUCHUSB_GND
12	HOT PLUG DETECT
13	DATA0_N
14	DATA0_P
15	DATA1_N
16	DATA1_P
17	DATA2_N
18	DATA2_P
19	DIGITAL GND
20	DIGITAL GND
21	GND
22	DDC_CLK
23	DDC_DATA
24	GND_DDC
25	+5V_DDC
26	DIGITAL GND
27	DIGITAL GND
28	DIGITAL GND
29	DIGITAL GND
30	DIGITAL GND
31	NC
32	BKG0
33	RESET_N
34	+5V_D
35	GND
36	DEBUG Tx
37	DEBUG Rx
AMPHENOL- 88-569724-35P	
MATING PLUG- MS27467E15B35S	

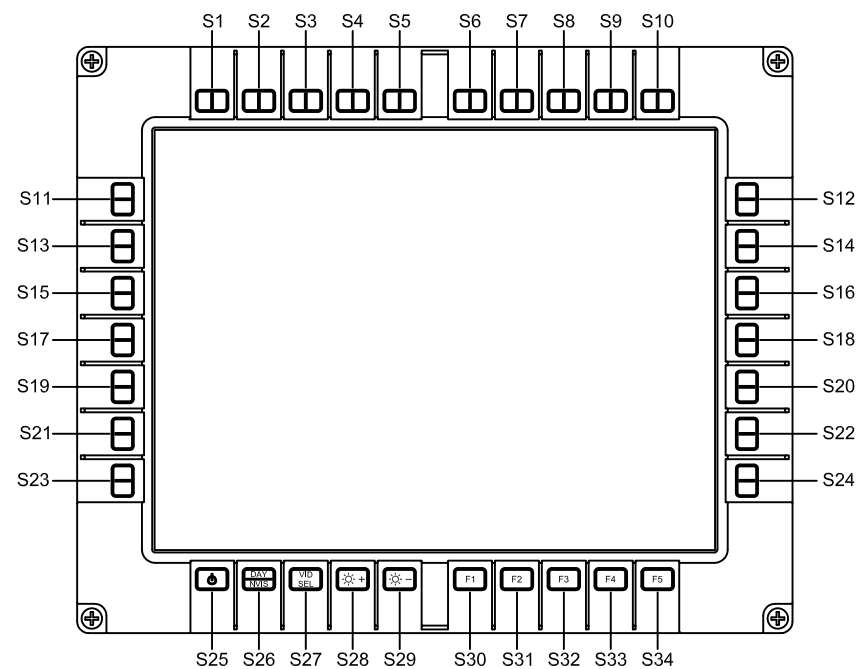
**(J3) MIL-DTL-38999 SERIES I**

PIN	MNEMONIC
1	RED
2	RED-GND
3	GRN
4	GRN-GND
5	BLU
6	BLU-GND
7	HSYNC
8	VSYSN
9	SYNC-GND
10	NTSC VIDEO
11	NTSC RETURN
12	NC
13	NC
AMPHENOL- 88-569722-35P	
MATING PLUG- MS27467E11B35S	

KEY	SEND DATA
S1	A
S2	B
S3	C
S4	D
S5	E
S6	F
S7	G
S8	H
S9	I
S10	J
S11	K
S12	L
S13	M
S14	N
S15	O
S16	P
S17	Q
S18	R
S19	S
S20	T
S21	U
S22	V
S23	W
S24	X
S25	N/A
S26	N/A
S27	N/A
S28	N/A
S29	N/A
S30	Y
S31	Z
S32	@
S33	#
S34	\$

3.3 VDC SERIAL LINK ASCII COMMANDS ARE AS FOLLOWS:

- KEY DOWN (SENT EVERY 50msec) = qD[n]<CR><LF>
- n = SEND DATA FOR KEY
- KEY UP (ONCE ON RELEASE) = qU[n]<CR><LF>
- BAUD RATE 9600 (8,1,NONE)



**INSTALLATION/OUTLINE  
15 INCH SEALED MONITOR**

SIZE	CAGE NO.	REV
D	70MF8	1
SCALE 1/1		SHEET 2 OF 2