

NSI 38MM STAINLESS STEEL TRACKBALL MOUSE WITH SCROLL WHEEL

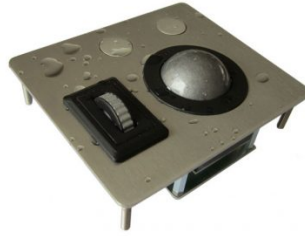


Panelmount Trackball Mouse with Scroll Wheel

- Waterproof & Environmentally Sealed to IP68 standard when properly installed
 - 38 mm Laser Trackball Mouse with scroll wheel
 - Compact design
 - Easy Maintenance - Removable Ball
 - Combo PS/2 & USB output



GALLERY IMAGES



PRODUCT DESCRIPTION

The MTSX38 “Scroll&Roll” trackball is the worlds’ first waterproof trackball with integrated IP68 scroll wheel. Easy scrolling & rolling throughout your applications, even in the harshest of environments.

It's equipped with a waterproof 38 mm laser trackball. A removable top ring facilitates the cleaning of ball and ball compartment for use in even the most dusty environments. The use of stainless steel for the various parts ensures the best resistance in salty or greasy environments. Due to its outstanding sealing, its professional style and its industrial robustness, these trackball units are the best suited pointing device for all harsh or hostile environments, indoor and outdoor.

These panel mount types are available with panel mount studs or with holes (for countersunk M4 screw).

Furtheron you can choose for a blank or matt blackened carrier plate. A silicone sponge gasket is included with the module to ensure adequate sealing into the customers' panel or console and a cover plate on the rear side protects the components. This series is directly plug compatible to PS/2 or USB ports and offers very straight forward mounting and integration.