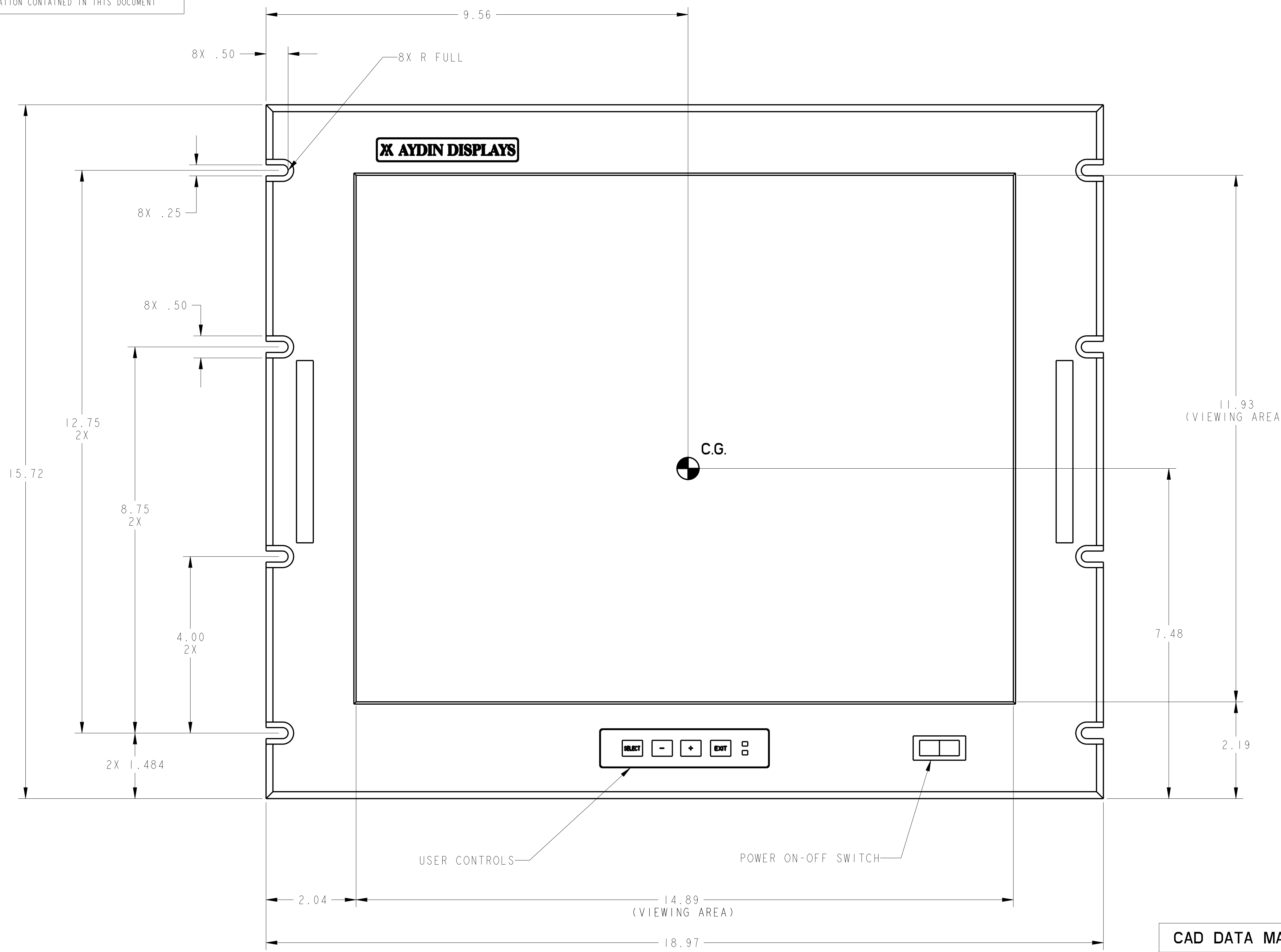
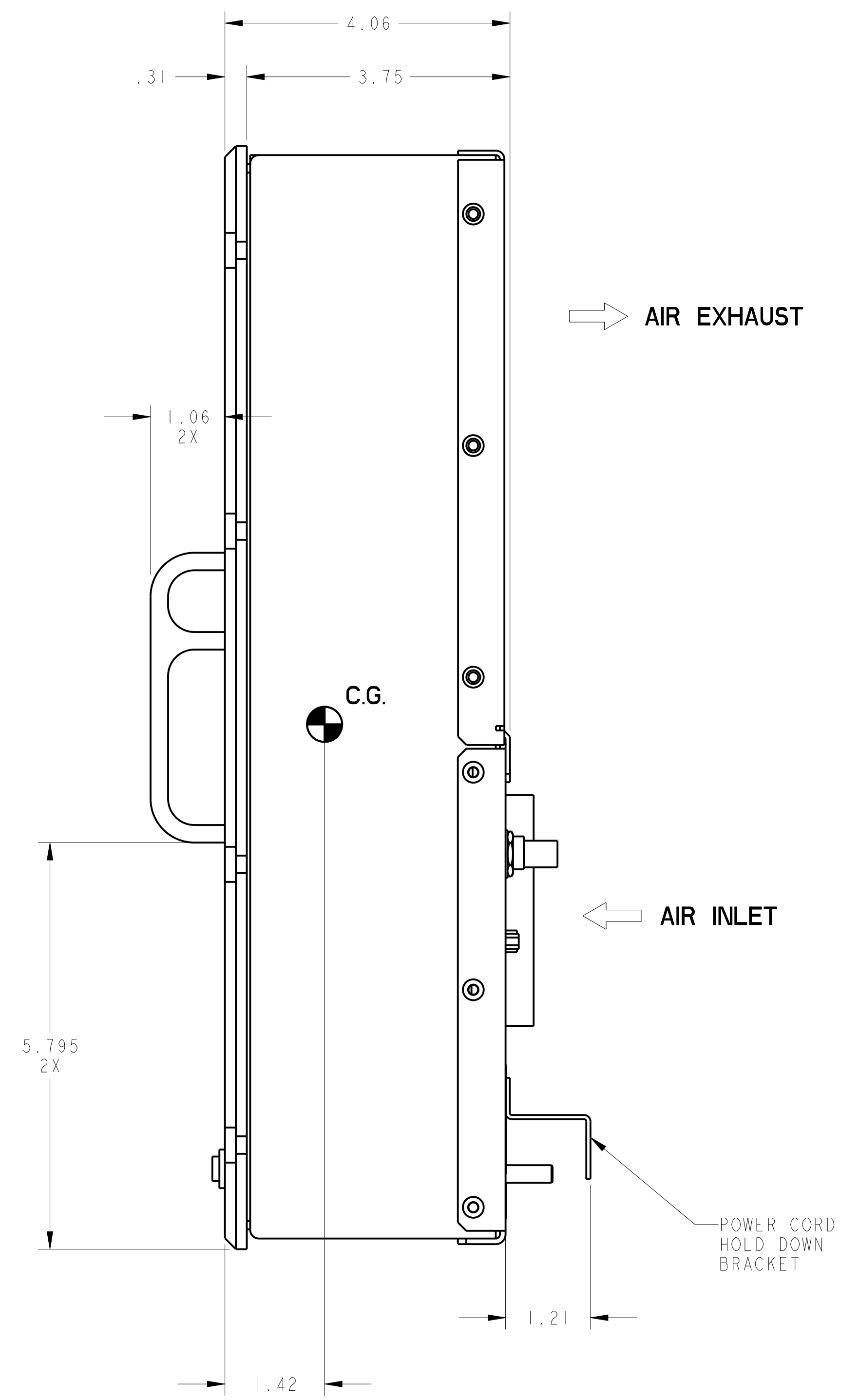


NOTICE TO PERSONS RECEIVING THIS DOCUMENT: THIS DOCUMENT IS THE EXCLUSIVE PROPERTY OF AYDIN DISPLAYS, INC. IT CONTAINS PROPRIETARY AND CONFIDENTIAL INFORMATION OF THE COMPANY, AND IS DELIVERED ON THE EXPRESS CONDITION THAT IT IS NOT TO BE DISCLOSED OR REPRODUCED IN WHOLE OR IN PART, NOR USED FOR MANUFACTURE BY ANYONE OTHER THAN AYDIN DISPLAYS, INC.; AND THAT NO RIGHT IS GRANTED TO DISCLOSE OR SO USE ANY INFORMATION CONTAINED IN THIS DOCUMENT

ZONE		LTR	REVISION DESCRIPTION	DATE	APPROVED
0			INITIAL	8/11/11	EP
1			ADDED NOTE 3, AIR FLOW & HANDLE DIM. JK 10/27/11	—	EP
1			SHT 1, NOTE 2: WEIGHT WAS 22.5 (EST). JK 2/13/13	—	EP



FRONT VIEW



AIR EXHAUST

AIR INLET

POWER CORD HOLD DOWN BRACKET

- NOTES:
- ALL DIMENSIONS ARE NOMINAL AND FOR REFERENCE ONLY.
 - WEIGHT: 19.3 LBS (1ST ARTICLE). INDICATES CENTER OF GRAVITY, C.G.
 - AYDIN P/N FOR BASE MODEL IS 356-7058-501.

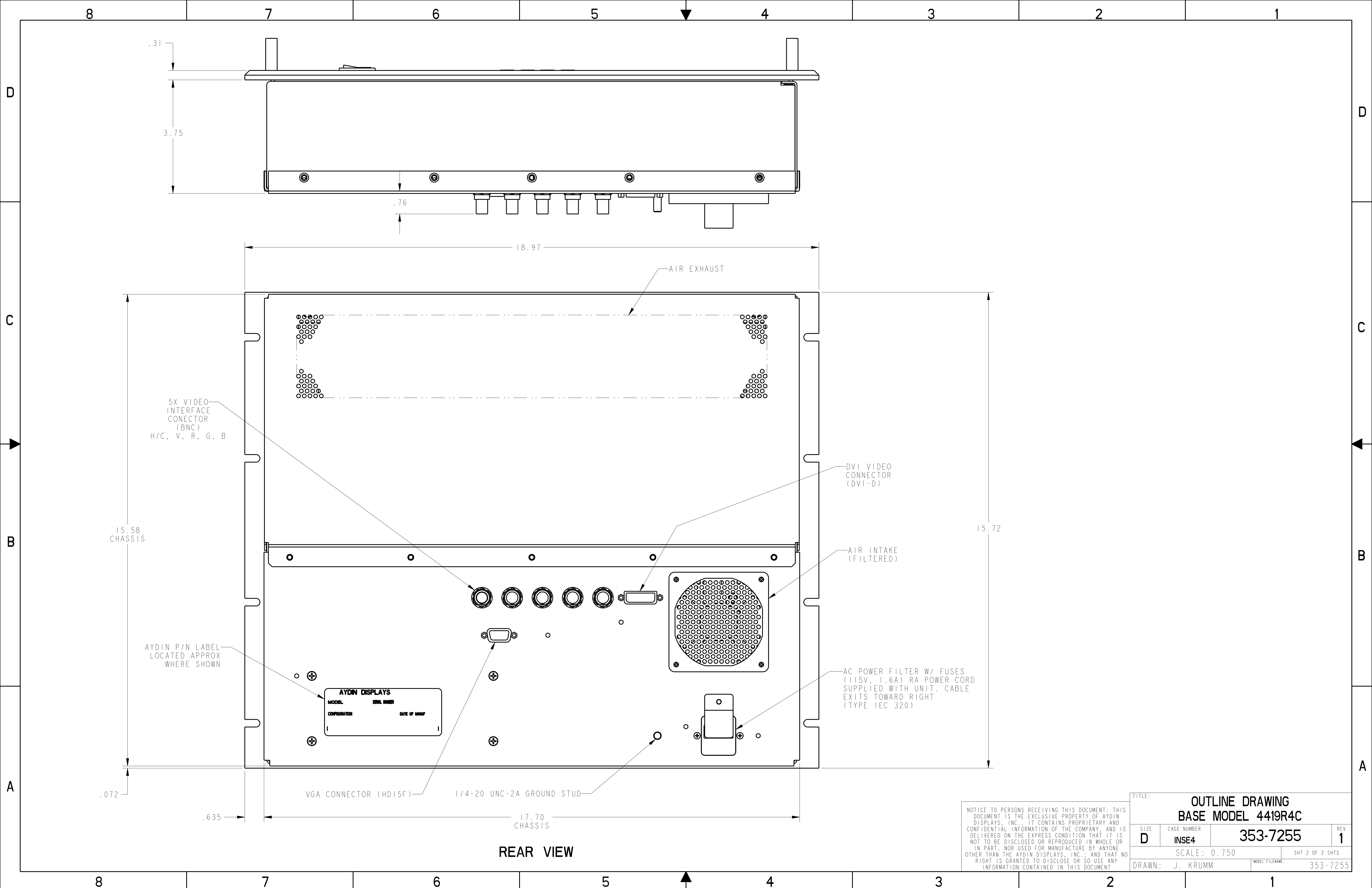
CAD DATA MANAGEMENT	
353-7255	ASM
353-7255	DRW
353-7255_REV_1	PDF

APPLICATION	
MODEL FILENAME	4419R4C
NEXT ASSY	USED ON

DRAWN	J. KRUMM	24-Mar-11
CHECKED	E. PELLICCIOTTI	
DRAFTING	N/A	
ENGINEER	E. PELLICCIOTTI	
APPROVED MFG	N/A	
APPROVED QA	N/A	
MODEL FILENAME	353-7255	

AYDIN DISPLAYS INC			
TITLE: OUTLINE DRAWING BASE MODEL 4419R4C			
SIZE	CAGE NUMBER	DRAWING NUMBER	REV
D	INSE4	353-7255	1
SCALE: 0.750		DATE: 24-Mar-11	SHT 1 OF 2 SHTS

PRO-E GENERATED



REAR VIEW

NOTICE TO PERSONS RECEIVING THIS DOCUMENT: THIS DOCUMENT IS THE EXCLUSIVE PROPERTY OF AYDIN DISPLAYS, INC. IT CONTAINS PROPRIETARY AND CONFIDENTIAL INFORMATION OF THE COMPANY, AND IS DELIVERED ON THE EXPRESS CONDITION THAT IT IS NOT TO BE DISCLOSED OR REPRODUCED IN WHOLE OR IN PART, NOR USED FOR MANUFACTURE BY ANYONE OTHER THAN THE AYDIN DISPLAYS, INC.; AND THAT NO RIGHT IS GRANTED TO DISCLOSE OR SO USE ANY INFORMATION CONTAINED IN THIS DOCUMENT

TITLE: OUTLINE DRAWING BASE MODEL 4419R4C			
SIZE D	CAGE NUMBER INSE4	353-7255	REV 1
SCALE: 0.750			SHT 2 OF 2 SHTS
DRAWN: J. KRUMM		MODEL FILENAME: 353-7255	